

For our environment:



- automatic power shut down
- efficient swage cycle time
- water-based paint

TALURIT®

The compact and powerful swager!

- Economically priced
- Robust design
- Total reliability
- User friendly
- Automatic power shut down
- Variable speed

130T SWAGER - TYPE 1VS TALURIT® SYSTEM

GENERAL DESCRIPTION

The 130-ton Swager has a single pillar open throat design. It can be mounted either in upright position or upside down in a flat or tilted position (the different mounting positions is shown on the next page). We recommend to use the swager in position C. This swager is easy to use and the open design allows comfortable access to the swaging area. An efficient 4 kW hydraulic unit (HAGG 130T) completes the swager system.

In single stage this 130T swager has a capacity to swage T and UM ferrules up to size 16. Size 20 is maximum for this swager when using multi stage swaging.

The swaging operation is controlled by a foot pedal and is permitting the operator using both hands to handle the rope assembly. In addition to the standard up/down function, the foot pedal can activate a "hold position" to facilitate rope or sling eye adjustment and is making tool set-up quicker.

The retraction length of the piston can be adjusted by the stroke limiter. The hydraulic unit shuts down after an adjustable idle time, and can be started again by just pressing the foot pedal. This energy saving feature is also in addition reducing the already low noise level.

FERRULES/FITTINGS	CAPACITY
T Aluminum	size 16 single stage
	size 20 multi stage
UM Aluminum	size 16 single stage
	size 22 multi stage
STT Sockets/Terminals Carbon steel	1/4"
TAL-X Flemish Eye Sleeves Carbon steel	5/8"

Note! Values above are approximate guidelines



P 0130T 1VS
Mounted in position A

Variable speed

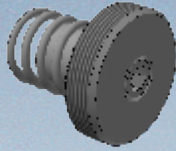
With the variable speed (VS) button, the speed of the piston can be customized. By turning up the speed adjustment to maximum the piston will move with 9,6mm/s up to a force of 30 ton. It will then slow down until maximum force is reached and the piston is moving with 1,8mm/s. The speed adjustment can be set at any speed between 1,8-9,6mm/s.

Pressure gauge

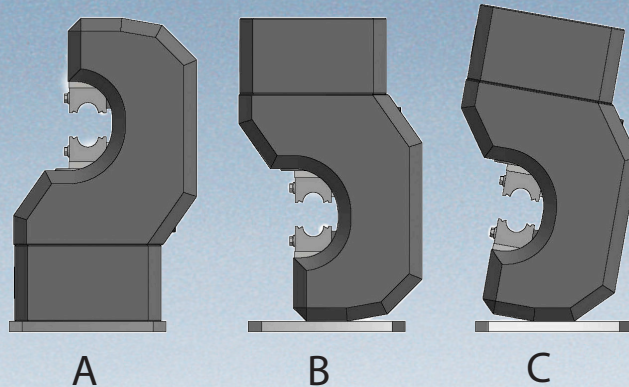
With the pressure gauge, MA 130T, it is possible to pre-set the required pressure and get the die set to open automatically once this pre-set pressure is reached. Saving production cycle time and reducing operator movements and wear of the dies.

EQUIPMENT	STANDARD	OPTIONS
Die holder	FIX B1	-
Dies	B1 and B2	-
Power	4 kW	-
Electrical pressure gauge	MA 130T	-
Fastening nut for eccentric load (for example TAL-X and swaged terminals)	-	B1 ECC
Different mounting positions for press head (with reference to next page)	C	A or B

The original mechanical splicing systems.



B1 ECC - Spring loaded fastening nut



Mounting positions

OPTIONAL EQUIPMENT

Die holder

The base die holder for the 130T swager is FIX B1/B2. Add the spring loaded fastening nut B1 ECC to convert the die holder into a system suitable for swaging flemish eye sleeves and terminals. B1 ECC will make the dies float.

Dies

Die sizes B1(48x70 mm) and B2 (50,2x70 mm) are standard.

Note! All our dies are manufactured from high quality, hardened, and tempered steel for long life time and durability.

CAPACITY		
Max. swaging force (kN)		1300
Max. fluid pressure, approx (bar)		313
Working pressure (bar)		0-313
Length of stroke (mm)		45
Die block sizes		B1 and B2
Power (kW)		4,0
Rated current (A)	240/400V 50Hz	14/8,5
	230V 60Hz	20
Piston velocity (mm/s)	Pressure upp to 300 kN	9,6
	At maximum pressure	1,8
Inlet/outlet threads on couplings		3/8"
Max. amount of oil (l) <i>Oil is not delivered with the swager</i>		30
Noise level (dB (A))		Less than 70
Dimensions L x W x H (mm)		590 x 690 x 1 425
Height of table (mm)		845
Working height (mm) <i>Centre line where dies are closed</i>		1 242
Weight approx. (kg) <i>Without oil</i>		460