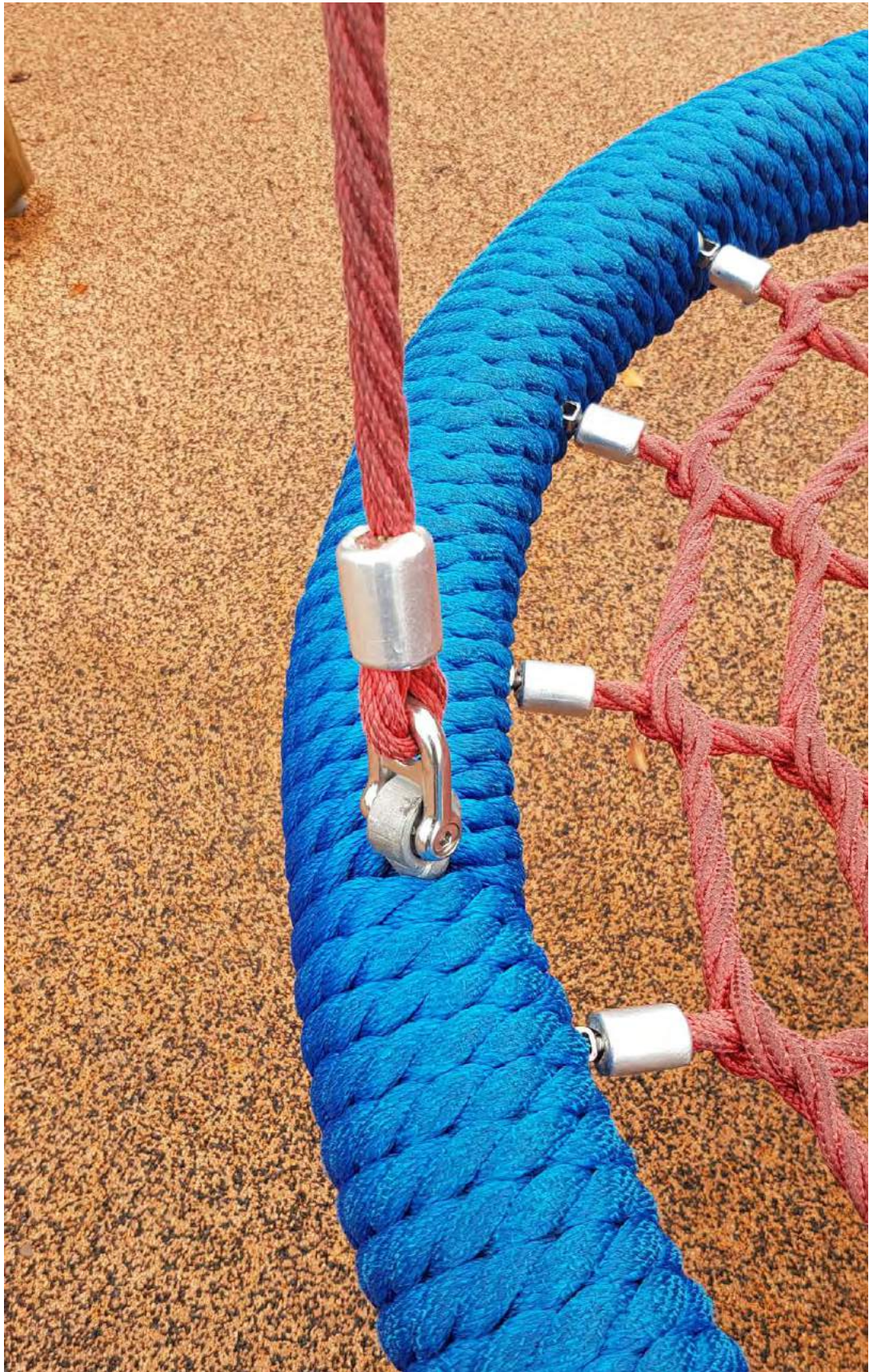




GERRO™ COMBI Playground Systems

PLAYING SAFE SINCE 1993

TALURIT™





GERRO™ COMBI SYSTEMS

GERRO™ COMBI is a world leading playground system of ferrules to be used together with GERRO™ COMBI combination rope. The aluminium ferrules ensure a long lifetime and safe environment. The system is widely used all over the world for applications such as protection nets, playground equipment, sports and leisure, stage and rigging and even fishing equipment.

TALURIT™ has been the original since 1948 and it shows.

Thanks to the innovative design all GERRO™ COMBI ferrules are swaged with smooth edges. It requires minimum manual grinding to ensure smooth edges and great safety for the end user.

All data regarding load and required pressure is based on extensive testing with our GERRO™ COMBI combination rope. Maximum load can vary with variations in combination ropes. The load value is stated in kN, where 30 kN is about 3000 kg.

The number in the article number is a reference of combination rope to be used. E.g. GC16-E is for rope diameter 16 mm.



Eye ferrules

GCxx-E and GCxx-EK

These ferrules are swaged over two rope parts to form an eye. This assembly is perfect for multiple different ways of anchoring. To avoid wear and tear a thimble can be incorporated in the eye. GCxx-E and GCxx-EK are the same kind of ferrule with the EK-version being shorter. The E and EK ferrules are swaged in press dies with rounded pocked ends.

Aluminium		
Art no.	Max load approx	Required pressure
GC16-E	30 kN	900 kN
GC16-EK	15 kN	450 kN
GC18-E	35 kN	900 kN
GC18-EK	20 kN	600 kN
GC20-E*	50 kN	900 kN
GC20-EK*	XX kN	XXX kN

* Requires a larger swager than a 150T swager



Bolt-joint ferrules

GCxx-B, GCxx-BK

The Gerro Combi B & BK ferrules are pressed on the end of a combination rope together with a threaded rod och M10 (or equivalent) eye-bolt on the opposite end of the rope. This feature makes it a great option when attaching netting to a fixed structure. The GCxx-BK is a shorter version of the standard B-version and the perfect choice when you have limited space available or when you need to retro-fit a secure end to an existing fixture.

Suitable for both M10 and 3/8" UNC bolts.

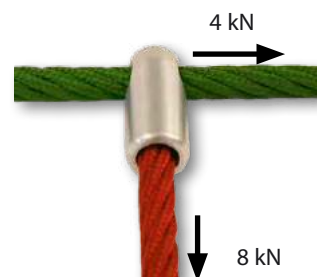
Aluminium		
Art no.	Max load approx	Required pressure
GC16-B	15 kN	900 kN
GC16-BK	7 kN	450 kN
GC18-B	20 kN	900 kN
GC18-BK	10 kN	500 kN
GC20-B	XX kN	XXX kN
GC20-BK	XX kN	XXX kN
GCM10-35 (rod)	N/A	N/A
GC16-G M10 (bolt)	N/A	N/A



T-cross joint ferrules

GCxx-TCK

Our GCxx-TCK is used for quick and easy construction of playground netting where you need a T-cross termination of two ropes. Before swaging, the rope passing through the ferrule is secured with a screw. It is then swaged in a press die with one rounded pocket end. Require minimum manual grinding to ensure smooth edges and great safety for the end user.

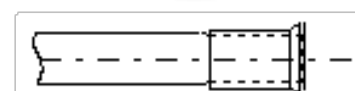


Aluminium		
Art no.	Max load approx	Required pressure
GC16-TCK	4 kN / 8 kN	500 kN
GC18-TCK	4 kN / 8 kN	500 kN
GC20-TCK	X kN / X kN	XXX kN
GC16-SCREW 4,8x50 (bolt, 4,8x50, pozidrive)	N/A	N/A

T-joint ferrules

GC16-T

The GC16-T is swaged directly on to the combination rope as a type of end stop. The ferrule can then be used in combination with different kinds of net construction systems. A great product for retro-fitting and playground maintenance.



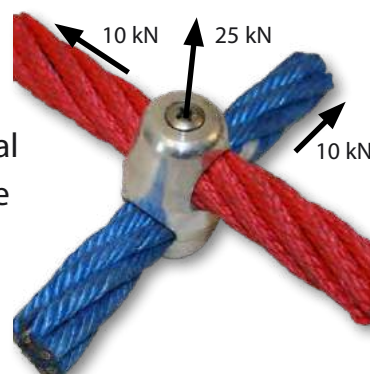
Galvanised carbon steel		
Art no.	Max load approx	Required pressure
GC16-T	10 kN	700 kN

Cross joint ferrules

GCxx-C

The innovative GCxx-C is a patented solution to make high quality cross joints on combination ropes. With custom designed press dies and a special Gerro Combi swager it is possible to press this slim cross fixing both on site and in a workshop and achieve very strong compression, ensuring an extremely safe termination. Before pressing, the ropes are fixed with a screw, which after pressing is non-detachable. Require minimum manual grinding to ensure smooth edges and great safety for the end user.

Patent solution



Aluminium		
Art no.	Max load approx	Required pressure
GC16-C	10 kN / 25 kN	70 kN
GC18-C	10 kN / 25 kN	70 kN
GC20-C	XX kN / XX kN	XX kN
GC16-SCREW 4,8x50 (bolt, 4,8x50, pozidrive)	N/A	N/A

Non swage cross joint ferrules

GCxx-SCF

This cross ferrule is used to make a cross joint when producing for examples climbing nets. It is designed to be stable and durable and is by anodizing available in different colors. The cross ferrule is mounted with a screw and should not be swaged. It has a very slim and child-friendly design.

GCxx-SCF is also available in blue, black or red.



Aluminium		
Art no.	Max load approx	Required pressure
GC16-SCF	1,5kN	N/A
GC16-SCF screw (BOLT 4,2x40, TORX)	N/A	N/A

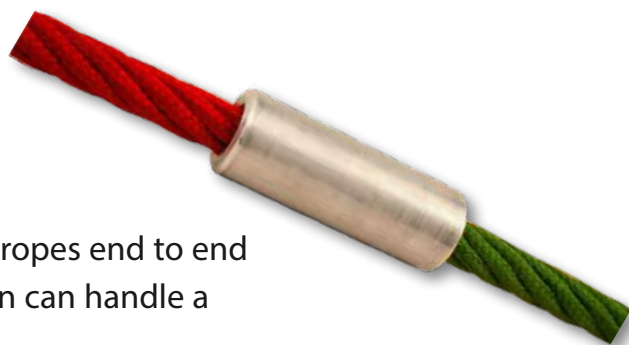
Joint ferrules

GC16-J

The GC16-J ferrule makes a difficult job simple.

With this special ferrule it is possible to join two ropes end to end with great quality. After pressing, the termination can handle a maximum load of 15kN.

Require minimum manual grinding to ensure smooth edges and great safety for the end user.



Aluminium		
Art no.	Max load approx	Required pressure
GC16-J	15 kN	1 000 kN
GC18-J	XX kN	XXXX kN
GC20-J*	XX kN	XXXX kN

** Requires a larger swager than a 130T swager*

Stop ferrules

GCxx-S

Our GCxx-S is swaged directly on the combination rope at any given position to act as a stop. It can also be used as a short end joint, such as the GC16-J where space might be limited.

The GCxx-S is swaged in a rounded pocket die that requires minimum manual grinding to ensure smooth edges and great safety for the end user.



Aluminium		
Art no.	Max load approx	Required pressure
GC16-S	10 kN	500 kN
GC18-S	15 kN	500 kN
GC20-S	XX kN	XXX kN

Other terminations

When there is a will there is a way!

GERRO™ COMBI has a large field of application. We know of some, but for sure there are many others. If you have an idea, our in house engineering department and factory equipped with modern technology can design and test your product, giving you a safe and efficient product ready to use.

The following ferrules are example of custom fit products.



NEW PRODUCTS!

Opened and closed ferrules

GC-KF, GC-KE, GCxx-RE and GCxx-RF

Two designs, four products. Endless possibilities.

Our new "fork" and "eye" connectors is now available for both chain and traditional combination rope.

Compatible with GC16-RMU/RSP rope and 6mm DIN766 shortlink A4 (stainless steel) chain.

The same die is used for both rope and chain versions.



Aluminium		
Art no.	Max load approx	Required pressure
GC-KF	10kN	500kN
GC-KE	10kN	500kN
GC16-RE	10kN	500kN
GC16-RF	10kN	500kN
GC18-RE	10kN	500kN
GC18-RF	10kN	500kN
GC20-RE	in process	xx
GC20-RF	in process	xx

The new design requires less material and less swaging capacity than the previous rope version. The swaging dies for these ferrules are rounded on one side to ensure a smooth transition between the swaged and eye/fork area.



Chain to rope ferrules

GCxx-K

Our new rope to chain connector for situations that demands that extra creativity. Swings, handrails, bridges etc. This new type of connector ensures even greater designs in the playground industry. Compatible with GC16-RMU/RSP rope.



Aluminium		
Art no.	Max load approx	Required pressure
GC16-K	20kN	1 000 kN
GC18-K	20kN	1 000 kN
GC20-K	in process	xx

Figure-8 ferrule

SYNCRIMP™

SYNCRIMP™ ferrules are manufactured in "figure 8" thin walled extruded aluminium. They are used with hemp, manila, nylon dacron, cotton and all types of fibre or synthetic rope, bungee cord and plastic coated cables producing a flash free pressing and utilise special swages. These ferrules are designed to give a slim profile without sharp or obstructive projections and giving reasonable strength of the termination. The SYNCRIMP™ ferrules are available in many different sizes see diagram below. The SYNCRIMP™ ferrules can be ordered in other lengths but the lengths below are standard. You can swage up to SYNCRIMP 10 in our 20 ton swager and up to SYNCRIMP 16 in our 40 ton swager.



TECHNICAL DATA				
Art no.	Size (mm)	Length(mm)	Dia. after swaging (mm)	Swaging dies article no.
SYNCRIMP 08/24	08	24	14	A, B1, C (SYN 08)
SYNCRIMP 10/28	10	28	16	A, B1, C (SYN 10)
SYNCRIMP 12/36	12	36	20	A, B1, C (SYN 12)
SYNCRIMP 14/42	14	42	22	A, B1, C (SYN 14)
SYNCRIMP 16/48	16	48	24	A, B1, C (SYN 16)

Clamping products

TALUNET C-type Clamp

The Gerro Combi C-type Clamp makes tricky parallell connections between ropes a thing of the past. The C-Clamp even gives you the option together, making transitions from 16 to 18 mm much easier.



Aluminium		
Art no.	Max load approx	Required pressure
TN-C 16/15	in process	xx
TN-C 16/20	in process	xx
TN-C 18/20	in process	xx

TALUNET H-type clamp

Our new H-clamp is optimized for construction of pilot ladders and similar systems.

Strength and cost efficiency have been our highest priorities in development of this product.



Aluminium		
Art no.	Max load approx	Required pressure
TN-H 20/15	in process	xx
TN-H 20/19	in process	xx



Retrofit products

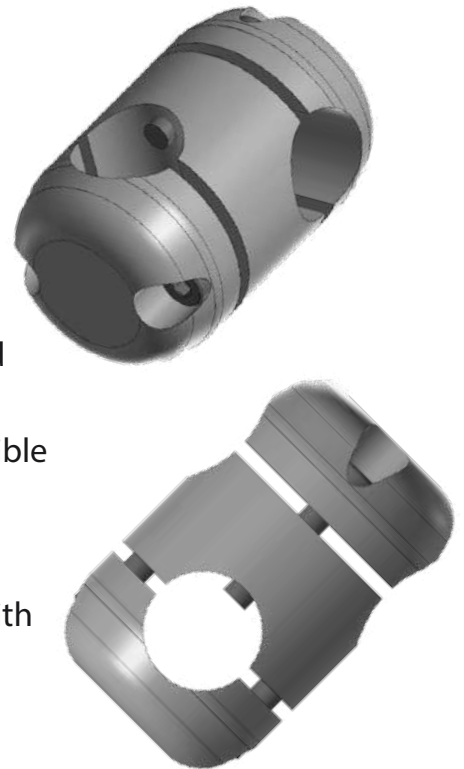
GCxx-C Retrofit

The new Gerro Combi GC16-C Retrofit will revolutionize the way playgrounds and adventure parks maintain and repair their nettings.

This new connector eliminates the need for rope replacements, bringing swagers on site while still maintaining great quality and safety for the end users.

Made of corrosion resistant aluminium. Gives the strongest possible solution for this application. Takes only a fraction of the time to assemble compared to the swaged equivalent product.

Perfect for inspection and maintenance & service. Compatible with GC16-RMU/RSP. No dies needed.



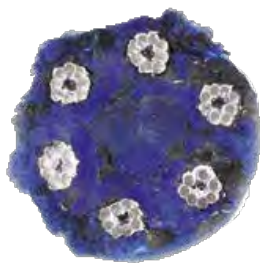
GCxx-P Retrofit

The GC16-P Retrofit is a great replacement option for when the plastic connector might have failed or a complete new rope system is out of the question.

Same technique for assembly as the retrofit cross connector.

Combination rope

GERRO™ COMBI Combination Rope is a combination of steel and fibre rope. The rope is preformed with right regular lay. It is also UV protected, which aids the colours from fading. Available in diameters 16, 18 and 20 mm.



- Right hand regular lay - Preformed.
- Steel wire strands covered with PP multi fibres/PP split film.
- Galvanized.
- Tensile strength: 1570 N/mm²

Code no.	Dia. mm	Construction	Steel area mm ²	Approx. weight	Min. breaking load (kN)
GC16-RMU_	16,0	6x8	18,5	0,26	32,4
GC18-RMU_	18,0	6x8	24,1	0,34	42,2
GC20-RMU_	20,0	6x8	30,5	0,43	51,0
_ = Colors: Y = Yellow B = Blue S = Black R = Red G = Green 1 = Mix					

Code no.	Dia. mm	Construction	Steel area mm ²	Approx. weight	Min. breaking load (kN)
GC16-RSP_	16,0	6x8	18,5	0,27	44,1
GC18-RSP_	18,0	6x8	24,1	0,35	54,0
GC20-RSP_	20,0	6x8	30,5	0,44	67,7
_ = Colors: C = Beige N = Navy Flex A = Blue w/ white marking yarn Y = Yellow S = Black B = Blue					



Suitable machines

P 0130T 1P Swager

The 130-ton Swager has a single pillar open throat design and can be used either in an upright position or upside down (on the picture below), bench mounted or on an optional work bench (like on the picture below). It offers total flexibility. This swager is easy to use and the open design allows easy access to the dies.

The powerful 130-ton swager can swage most listed ferrules in this folder. Swaging dies are type B1 and B2. Max. swaging force: 1300 kN

It has a capacity of 130 metric tons. Despite its capacity it is still very easy to use and move around when needed. This hydraulic swager comes with an efficient 4 kW hydraulic unit (HAGG 130T) with great features such as hold position, automatic return and shut down as well as a stroke limiter.

The 130 ton swager is a given choice in the playground industry.



130T Swager mounted on an optional work bench

EQUIPMENT	STANDARD	OPTIONS
Die holder	FIX B1	-
Dies	B1 and B2	-
Power	4 kW	-
Electrical pressure gauge	MA 130T	-
Wagon	-	130T Swager mounted on a wagon
Work Bench	-	130T Swager mounted on a work bench

UB-10T cross joint swager

UB-10T is a cross joint swager for GERRO™ COMBI. Thanks to the swagers relatively light weight and compact power pack, this makes it perfect for on-site manufacturing and maintenance. It has a single pillar open-throat design that makes swaging easy. Maximum swaging capacity of 7 ton (70 kN).

The Swager is easy to use in the field due to it's low weight and easy operation. A stand and a lifting eye are included. Ideal for mobile inspection inspection services as well as playground contractors.



C-RHU52 portable service and repair swager

Mobile C-RHU52 pressing head with optional battery powered pack. Ideal for repairing/manufacturing nets on site. No rounding. Maximum swaging capacity of 52 ton (520 kN).

Weighing only 18 kgs (complete with die) the swager is ideal for onsite use. When fixing ready-made nets the head can be opened for easy access.

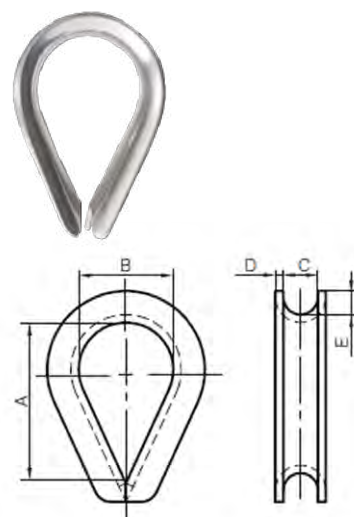


Accessories suitable for GERRO™ COMBI playground systems

Thimble AISI 316

Stainless steel thimbles

Part Code	C(mm)	B(mm)
S037SS14	16	34
S037SS16	18	40
S037SS18	20	45



DIN580 Eyebolts

Galvanised

Part Code	C(mm)	Working load limit (T)
XNEB582M10	25	0,23
XNEB582M12	30	0,34
XNEB582M16	35	0,7



DIN582 Eyenuts

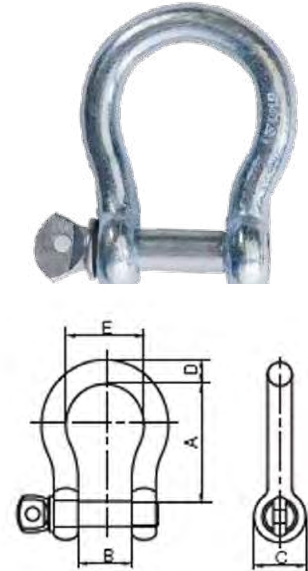
Part Code	C(mm)	Working load limit (T)
XNEN582M10	25	0,23
XNEN582M12	30	0,34
XNEN582M16	35	0,7



Commercial Bow Shackles

Galvanised

Part Code	D (mm)	A (mm)	B (mm)	E (mm)
XNCBS10MM	10	40	20	30
XNCBS11MM	11	44	22	34
XNCBS12MM	12	48	24	36

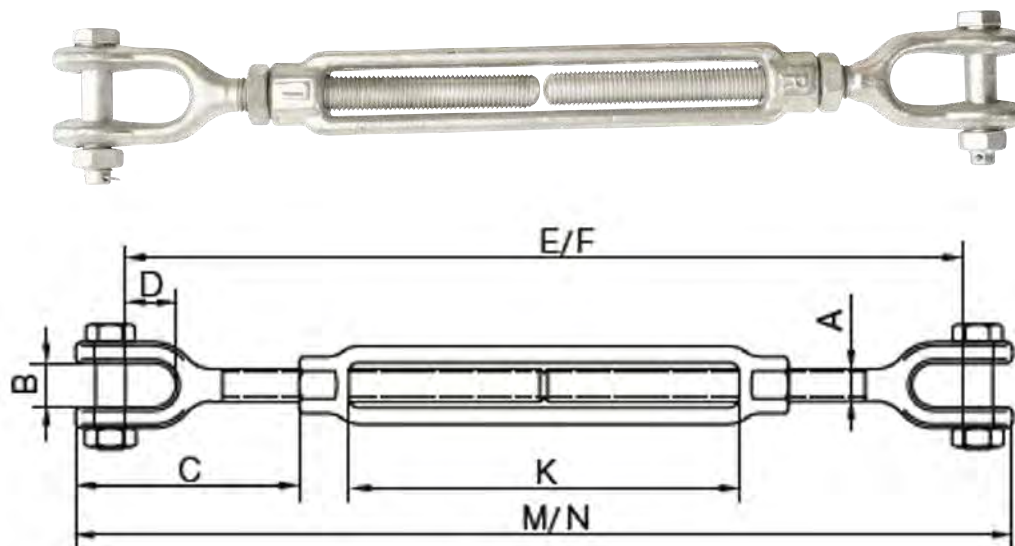


Forged Jaw/Jaw Turnbuckles

US Federal Specification, Hot Dipped Galvanised

Complete with Fitted Lock Nuts

Part Code	Working load limit (T)	B(mm)	D(mm)	M/N(mm)
XNTBJJ10	1,6	0,79	1,31	40,13/23,88
XNTBJJ11	2,3	0,94	1,5	24,1/16,6
XNTBJJ12	2,3	0,94	1,5	30,1/19,6





Talurit AB

Amalia Jönssons gata 29
421 31 Västra Frölunda
SWEDEN

Phone: +46 31 709 30 80
Service: +46 31 709 30 93
Fax: +46 31 47 10 71
E-mail: info@talurit.se
Website: www.talurit.com



Talurit (UK) Ltd

Unit 4 Shortwood Court
Shortwood Business Park
Hoyland Barnsley
South Yorkshire
ENGLAND S74 9LH

Phone: +44 1226 369960
Fax: +44 1226 361862
E-mail: info@talurit.co.uk
Website: www.talurit.com



Gerro GmbH

Carl-Benz-Strasse 1
78244 Gottmadingen
GERMANY

Phone: +49 7731 97030
Fax: +49 7731 970317
E-mail: info@gerro.de
Website: www.gerro.com



Talurit Pte Ltd

151 Chin Swee Road #03-30
Manhattan House 169876
SINGAPORE

Phone: +65 6732 0295
Fax: +65 6732 0297
E-mail: info@talurit.sg
Website: www.talurit.com



Talurit Machinery (Ningbo) Co., Ltd

No. 982 Mingzhou Road, Beilun
Ningbo 315800, Zhejiang
CHINA

Phone: +86 (574) 86308590
Fax: +86 (574) 86308591
E-mail: info@talurit.cn
Website: www.talurit.com

2016-08-18



Scan this QR Code with your
smart device to visit our website.

TALURIT™